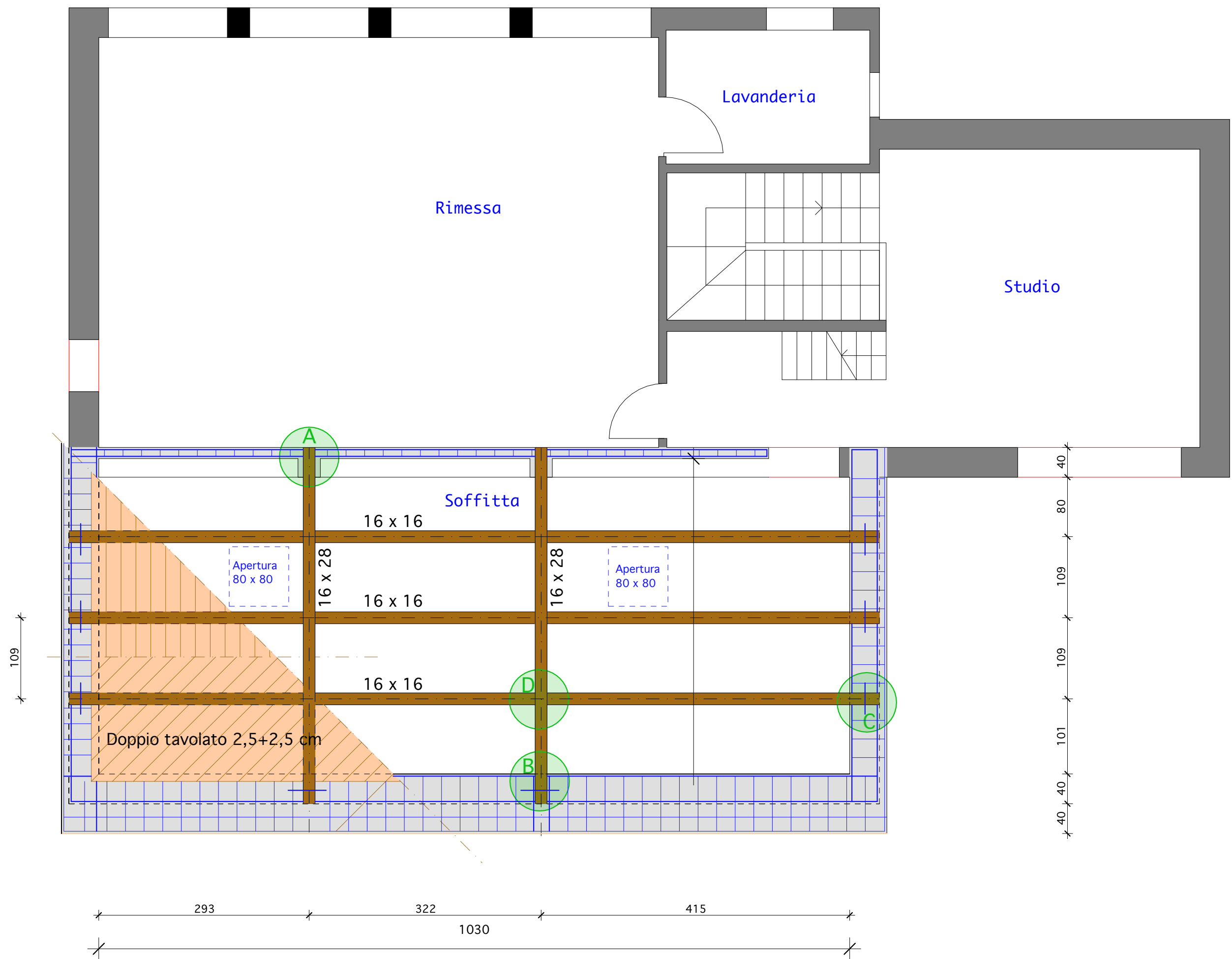
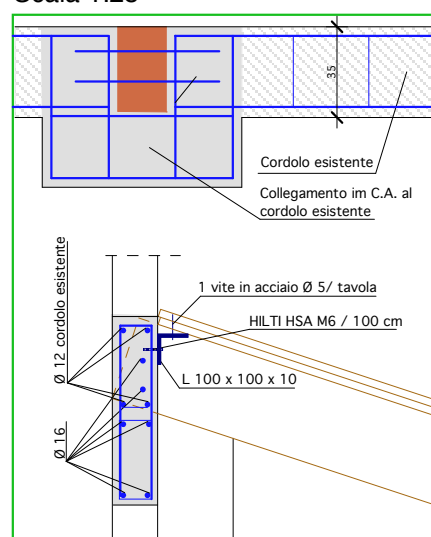


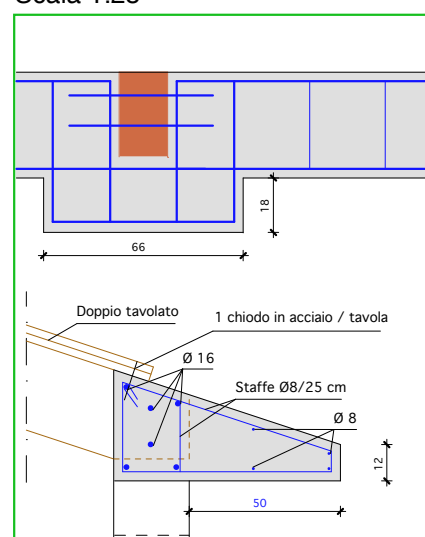
# PIANO SECONDO scala 1:50



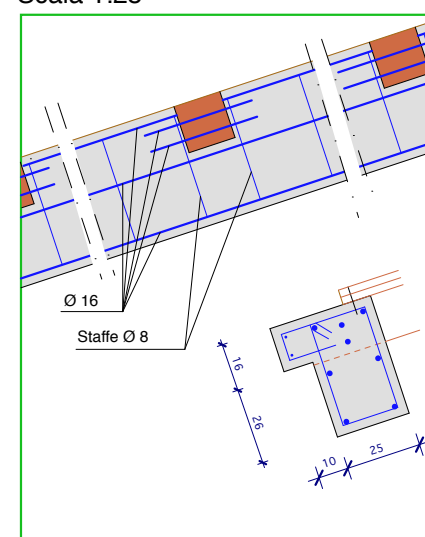
A - Collegamento travi-cordolo superiore  
Scala 1:25



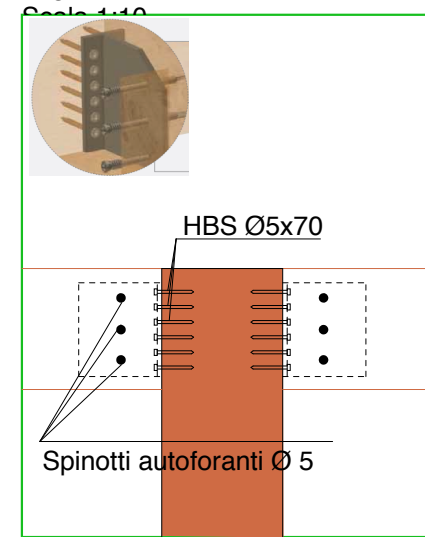
B - Collegamento travi-gronda  
Scala 1:25



C - Collegamento travi-cordolo  
Scala 1:25



D - Giunto a scomparsa Aluminio  
125  
Scala 1:50



## Caratteristiche giunto

• Spessore	s [mm]	6
• Altezze disponibili	H [mm]	65 - 95 - 125 - 155 - 185
• Larghezza ala	L <sub>A</sub> [mm]	45
• Lunghezza anima	L <sub>B</sub> [mm]	109,9
• Fori ala	Ø <sub>1</sub> [mm]	7,0
• Fissaggi fori ala	Tipo	Viti HBS+ Ø 5
• Fissaggi fori anima	Tipo	Spinotti autoforanti Ø 5